

MIG/MAG welding torches

Catalogue UM welding torch series



Product overview for the EWM UM welding torch series



Robust welding torches for daily use

The gas- and water-cooled welding torches in the UM welding torch series provide optimum work comfort and the best characteristics for daily use.

Impressive overall package: Solid technology – the sophisticated grip design guarantees optimum handling in any position.

- / Robust, ergonomic grip
- / Safe, precise operation thanks to rubber inserts and a ball joint on the grip
- / **Time-tested consumable – standard M6 and M8 threads:**
 - / Long service life
 - / Steady, stable arc
- / Euro torch connector



Type	UM 15 G	UM 24 G	UM 25 G
Cooling	Gas cooled "G"	Gas cooled "G"	Gas cooled "G"
Welding current CO ₂	180 A/60%	250 A/60%	230 A/60%
Welding current M21	150 A/60%	220 A/60%	200 A/60%
Shielding gas	Argon, mixed gas M21 or CO ₂ conforming to BS EN ISO 14175		
Wire diameter	0.6 to 1.0 mm	0.6 to 1.2 mm	0.6 to 1.2 mm
Hose package length	3 m/4 m/5 m	3 m/4 m/5 m	3 m/4 m/5 m
Connection	Euro torch connector	Euro torch connector	Euro torch connector
Torch data in accordance with	IEC 60974-7	IEC 60974-7	IEC 60974-7
Item number	3 m	394-600000-00000	394-600001-00000
	4 m	394-600000-00004	394-600001-00004
	5 m	394-600000-00005	394-600001-00005



UM 36 G	UM 240 W	UM 401 W	UM 501 W
Gas cooled "G"	Water cooled "W"	Water cooled "W"	Water cooled "W"
300 A/60%	300 A/100%	400 A/100%	500 A/100%
270 A/60%	270 A/100%	350 A/100%	450 A/100%
Argon, mixed gas M21 or CO ₂ conforming to BS EN ISO 14175			
0.8 to 1.4 mm	0.6 to 1.2 mm	0.8 to 1.6 mm	0.8 to 1.6 mm
3 m/4 m/5 m	3 m/4 m/5 m	3 m/4 m/5 m	3 m/4 m/5 m
Euro torch connector	Euro torch connector	Euro torch connector	Euro torch connector
IEC 60974-7	IEC 60974-7	IEC 60974-7	IEC 60974-7
394-600003-00000	394-600010-00000	394-600011-00000	394-600012-00000
394-600003-00004	394-600010-00004	394-600011-00004	394-600012-00004
394-600003-00005	394-600010-00005	394-600011-00005	394-600012-00005



For full information on our welding torches and matching accessories go to www.ewm-sales.com

MIG/MAG welding torch, gas-cooled • UM 15 G



- Practical and light MIG/MAG welding torch for use on construction sites and in workshops
- Ergonomic grip
- Anti-kink spring on the connection
- Type-related standard consumables
- **Equipment as supplied (steel wire):**
 - Gas nozzle, conical, Ø 12 mm; 53 mm
 - Contact tip M6 x 25 mm; Ø 0.8 mm
 - Contact tip holder M6

Duty cycle CO2

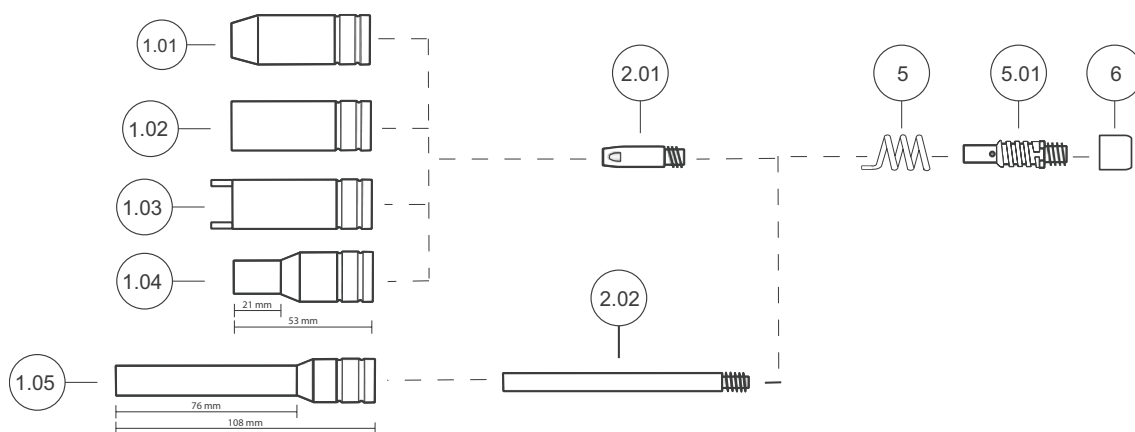
180 A / 60 %

Duty cycle M21

150 A / 60 %

Hose package length m	Item no.		
3.0	394-600000-00000		
4.0	394-600000-00004		
5.0	394-600000-00005		

Consumables



Item	Designation	Nozzle Ø mm	Wire Ø mm	Thread	Length mm	Material	PU Units	Item no.		
-	Centring tool for narrow-gap contact tip	-	-	-	-	-	1	394-000469-00000		
1.01	Gas nozzle, highly conical	9.5	-	-	53	Copper, nickel-plated	10	394-001212-00000		
1.01	Gas nozzle, conical	12	-	-	53	Copper, nickel-plated	10	394-000472-00000		
1.02	Gas nozzle, cylindrical	16	-	-	53	Copper, nickel-plated	10	394-000211-00000		
1.03	Spot welding nozzle, plug fitting	16	-	-	60	Copper, nickel-plated	10	394-000213-00000		
1.04	Narrow-gap gas nozzle with cylinder, plug fitting	10	-	-	53	-	1	394-002526-00000		
1.05	Narrow-gap gas nozzle with cylinder, plug fitting	10	-	-	108	-	1	394-000212-00000		
2.01	Contact tip	-	0.6	M6	25	E-Cu	20	394-003654-00000		
2.01	Contact tip	-	0.8	M6	25	E-Cu	20	394-001087-00000		
2.01	Contact tip	-	1	M6	25	E-Cu	20	394-001086-00000		
2.02	Narrow-gap contact tip	-	1	M6	83	E-Cu	1	394-000707-00000		
5	Nozzle spring	-	-	M6	-	-	10	094-023061-00000		
5.01	Contact tip holder	-	-	M6	-	-	10	094-023060-00000		
6	Stop nut	-	-	-	15	-	10	094-023552-00000		

MIG/MAG welding torch, gas-cooled • UM 24 G

- Gas-cooled standard MIG/MAG welding torch
- Ergonomic grip with ball joint
- Anti-kink spring on both the welding torch and the connection
- Type-related standard consumables

• Equipment as supplied (steel wire Ø 1.0):

- Gas nozzle, conical, Ø 12.5 mm; 63.5 mm
- Gas diffuser, 20 mm
- Contact tip M6 x 28 mm; Ø 1.0 mm
- Contact tip holder M6 x 26 mm

Duty cycle CO₂

250 A / 60 %

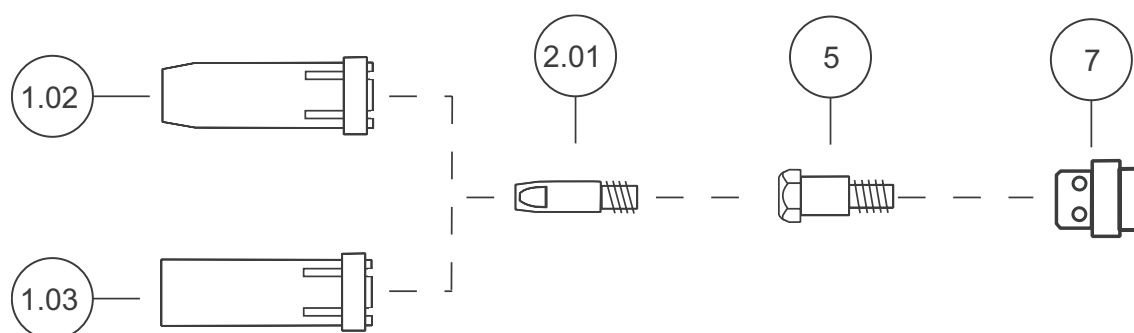
Duty cycle M21

220 A / 60 %

Hose package length m	Item no.
3.0	394-600001-00000
4.0	394-600001-00004
5.0	394-600001-00005



■ Consumables



Item	Designation	Nozzle Ø mm	Wire Ø mm	Thread	Length mm	Material	PU Units	Item no.
1.02	Gas nozzle, conical	12.5	-	-	63.5	Copper, nickel-plated	10	394-000361-00000
1.02	Gas nozzle, highly conical	10	-	-	63.5	Copper, nickel-plated	10	394-001234-00000
1.03	Gas nozzle, cylindrical	17	-	-	63.5	Copper, nickel-plated	10	394-000362-00000
2.01	Contact tip	-	0.8	M6	28	E-Cu	20	394-001191-00000
2.01	Contact tip	-	1	M6	28	E-Cu	20	394-001228-00000
2.01	Contact tip	-	1.2	M6	28	E-Cu	20	394-001229-00000
2.01	Contact tip	-	0.8	M6	28	CuCrZr	20	394-005407-00000
2.01	Contact tip	-	1	M6	28	CuCrZr	20	394-003339-00000
2.01	Contact tip	-	1.2	M6	28	CuCrZr	20	394-005224-00000
2.01	Contact tip, aluminium welding	-	0.8	M6	28	Copper	20	394-016105-00000
2.01	Contact tip, aluminium welding	-	1	M6	28	Copper	20	394-016107-00000
2.01	Contact tip, aluminium welding	-	1.2	M6	28	Copper	20	394-016108-00000
5	Contact tip holder	-	-	M6	26	Brass	10	394-000363-00000
7	Gas diffuser	-	-	-	-	-	10	394-000360-00000

MIG/MAG welding torch, gas-cooled • UM 25 G



- Gas-cooled standard MIG/MAG welding torch
- Ergonomic grip with ball joint
- Anti-kink spring on both the welding torch and the connection
- Type-related standard consumables
- **Equipment as supplied (steel wire Ø 1.0):**
 - Gas nozzle, conical, Ø 15 mm; 57 mm
 - Contact tip M6 x 28 mm; Ø 1.0 mm
 - Contact tip holder M6 x 35 mm

Duty cycle CO2

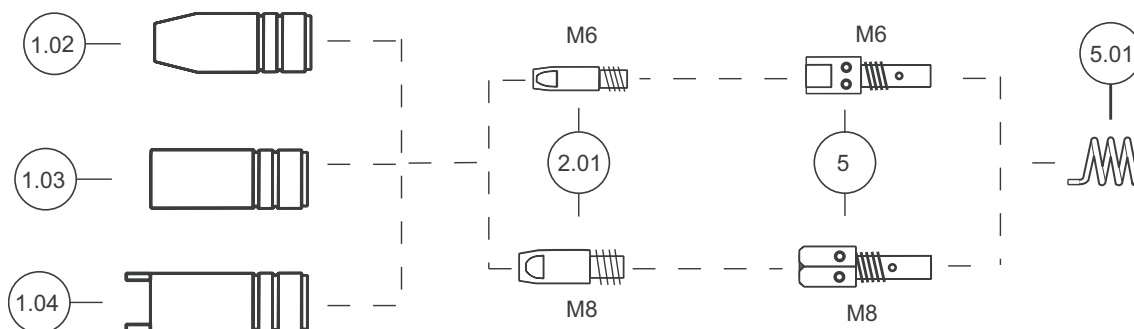
230 A / 60 %

Duty cycle M21

200 A / 60 %

Hose package length m	Item no.		
3.0	394-600002-00000		
4.0	394-600002-00004		
5.0	394-600002-00005		

Consumables



Item	Designation	Nozzle Ø mm	Wire Ø mm	Thread	Length mm	Material	PU Units	Item no.		
1.02	Gas nozzle, highly conical	11.5	-	-	57	Copper, nickel-plated	10	394-001647-00000		
1.02	Gas nozzle, conical	15	-	-	57	Copper, nickel-plated	10	394-000369-00000		
1.03	Gas nozzle, cylindrical	18.5	-	-	57	Copper, nickel-plated	10	394-000371-00000		
1.04	Spot gas nozzle	18	-	-	66	Copper, nickel-plated	10	394-000373-00000		
2.01	Contact tip	-	0.8	M6	28	E-Cu	20	394-001191-00000		
2.01	Contact tip	-	1	M6	28	E-Cu	20	394-001228-00000		
2.01	Contact tip	-	1.2	M6	28	E-Cu	20	394-001229-00000		
2.01	Contact tip	-	0.8	M6	28	CuCrZr	20	394-005407-00000		
2.01	Contact tip	-	1	M6	28	CuCrZr	20	394-003339-00000		
2.01	Contact tip	-	1.2	M6	28	CuCrZr	20	394-005224-00000		
2.01	Contact tip	-	0.8	M8	30	E-Cu	20	394-000447-00000		
2.01	Contact tip	-	1	M8	30	E-Cu	20	394-000941-00000		
2.01	Contact tip	-	1.2	M8	30	E-Cu	20	394-000942-00000		
2.01	Contact tip	-	0.8	M8	30	CuCrZr	20	394-014024-00000		
2.01	Contact tip	-	1	M8	30	CuCrZr	20	394-000450-00000		
2.01	Contact tip	-	1.2	M8	30	CuCrZr	20	394-000452-00000		
2.01	Contact tip, aluminium welding	-	0.8	M6	28	Copper	20	394-016105-00000		
2.01	Contact tip, aluminium welding	-	1	M6	28	Copper	20	394-016107-00000		
2.01	Contact tip, aluminium welding	-	1.2	M6	28	Copper	20	394-016108-00000		
2.01	Contact tip, aluminium welding	-	0.8	M8	30	E-Cu	20	394-016115-00000		
2.01	Contact tip, aluminium welding	-	1	M8	30	E-Cu	20	394-016117-00000		
2.01	Contact tip, aluminium welding	-	1.2	M8	30	E-Cu	20	394-016118-00000		
5	Contact tip holder	-	-	M6	35	-	10	394-001823-00000		
5	Contact tip holder	-	-	M8	35	-	10	394-000375-00000		
5.01	Nozzle spring	-	-	-	-	-	10	394-003656-00000		

MIG/MAG welding torch, gas-cooled • UM 36 G

- Gas-cooled standard MIG/MAG welding torch
- Ergonomic grip with ball joint
- Anti-kink spring on both the welding torch and the connection
- Type-related standard consumables
- **Equipment as supplied (steel wire Ø 1.2):**
 - Gas nozzle, conical, Ø 16 mm; 84 mm
 - Gas diffuser, 32.5 mm
 - Contact tip M8 x 30 mm; Ø 1.2 mm
 - Contact tip holder M8 x 35 mm

Duty cycle CO₂

300 A / 60 %

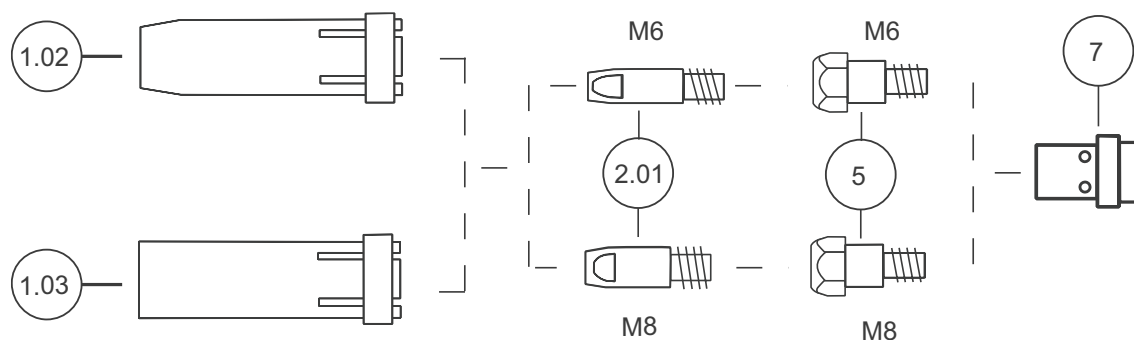
Duty cycle M21

270 A / 60 %

Hose package length m	Item no.
3.0	394-600003-00000
4.0	394-600003-00004
5.0	394-600003-00005



■ Consumables



Item	Designation	Nozzle Ø mm	Wire Ø mm	Thread	Length mm	Material	PU Units	Item no.
1.02	Gas nozzle, highly conical	12	-	-	84	Copper, nickel-plated	10	394-001241-00000
1.02	Gas nozzle, conical	16	-	-	84	Copper, nickel-plated	10	394-000431-00000
1.03	Gas nozzle, cylindrical	19	-	-	84	Copper, nickel-plated	10	394-000432-00000
2.01	Contact tip	-	0.8	M6	28	E-Cu	20	394-001191-00000
2.01	Contact tip	-	1	M6	28	E-Cu	20	394-001228-00000
2.01	Contact tip	-	1.2	M6	28	E-Cu	20	394-001229-00000
2.01	Contact tip	-	0.8	M6	28	CuCrZr	20	394-005407-00000
2.01	Contact tip	-	1	M6	28	CuCrZr	20	394-003339-00000
2.01	Contact tip	-	1.2	M6	28	CuCrZr	20	394-005224-00000
2.01	Contact tip	-	0.8	M8	30	E-Cu	20	394-000447-00000
2.01	Contact tip	-	1	M8	30	E-Cu	20	394-000941-00000
2.01	Contact tip	-	1.2	M8	30	E-Cu	20	394-000942-00000
2.01	Contact tip	-	0.8	M8	30	CuCrZr	20	394-014024-00000
2.01	Contact tip	-	1	M8	30	CuCrZr	20	394-000450-00000
2.01	Contact tip	-	1.2	M8	30	CuCrZr	20	394-000452-00000
2.01	Contact tip	-	1.4	M8	30	CuCrZr	20	394-000455-00000
2.01	Contact tip, aluminium welding	-	0.8	M6	28	Copper	20	394-016105-00000
2.01	Contact tip, aluminium welding	-	1	M6	28	Copper	20	394-016107-00000
2.01	Contact tip, aluminium welding	-	1.2	M6	28	Copper	20	394-016108-00000
2.01	Contact tip, aluminium welding	-	0.8	M8	30	E-Cu	20	394-016115-00000
2.01	Contact tip, aluminium welding	-	1	M8	30	E-Cu	20	394-016117-00000
2.01	Contact tip, aluminium welding	-	1.2	M8	30	E-Cu	20	394-016118-00000
5	Contact tip holder	-	-	M6	28	Brass	10	394-000433-00000
5	Contact tip holder	-	-	M8	28	Brass	10	394-000434-00000
7	Gas diffuser	-	-	-	32.5	-	10	394-012572-00000

MIG/MAG welding torch, water-cooled • UM 240 W



- Water-cooled standard MIG/MAG welding torch
- Ergonomic grip with ball joint
- Anti-kink spring on both the welding torch and the connection
- Type-related standard consumables
- **Equipment as supplied (steel wire Ø 1.0):**
 - Gas nozzle, conical, Ø 12.5 mm; 63.5 mm
 - Gas diffuser, 20 mm
 - Contact tip M6 x 28 mm; Ø 1.0 mm
 - Contact tip holder M6 x 26 mm

Duty cycle CO2

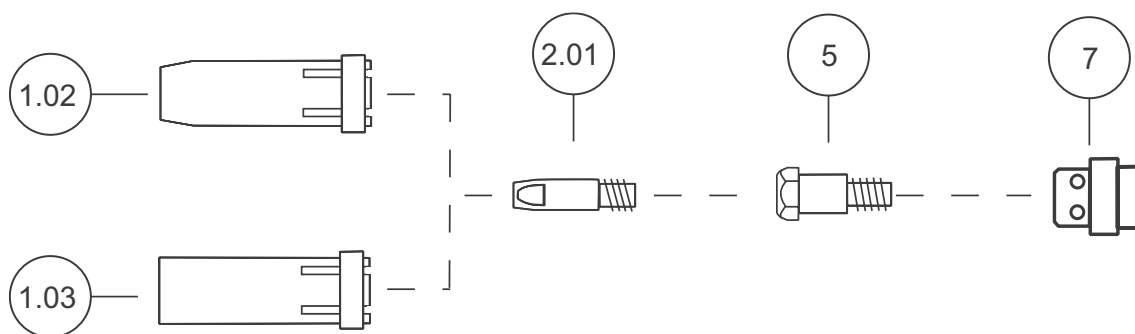
300 A / 100 %

Duty cycle M21

270 A / 100 %

Hose package length m	Item no.		
3.0	394-600010-00000		
4.0	394-600010-00004		
5.0	394-600010-00005		

■ Consumables



Item	Designation	Nozzle Ø mm	Wire Ø mm	Thread	Length mm	Material	PU Units	Item no.		
1.02	Gas nozzle, conical	12.5	-	-	63.5	Copper, nickel-plated	10	394-000361-00000		
1.02	Gas nozzle, highly conical	10	-	-	63.5	Copper, nickel-plated	10	394-001234-00000		
1.03	Gas nozzle, cylindrical	17	-	-	63.5	Copper, nickel-plated	10	394-000362-00000		
2.01	Contact tip	-	0.8	M6	28	E-Cu	20	394-001191-00000		
2.01	Contact tip	-	1	M6	28	E-Cu	20	394-001228-00000		
2.01	Contact tip	-	1.2	M6	28	E-Cu	20	394-001229-00000		
2.01	Contact tip	-	0.8	M6	28	CuCrZr	20	394-005407-00000		
2.01	Contact tip	-	1	M6	28	CuCrZr	20	394-003339-00000		
2.01	Contact tip	-	1.2	M6	28	CuCrZr	20	394-005224-00000		
2.01	Contact tip, aluminium welding	-	0.8	M6	28	Copper	20	394-016105-00000		
2.01	Contact tip, aluminium welding	-	1	M6	28	Copper	20	394-016107-00000		
2.01	Contact tip, aluminium welding	-	1.2	M6	28	Copper	20	394-016108-00000		
5	Contact tip holder	-	-	M6	26	Brass	10	394-000363-00000		
7	Gas diffuser	-	-	-	-	-	10	394-000360-00000		

MIG/MAG welding torch, water-cooled • UM 401 W

- Water-cooled standard MIG/MAG welding torch
- Ergonomic grip with ball joint
- Anti-kink spring on both the welding torch and the connection
- Type-related standard consumables
- **Equipment as supplied (steel wire Ø 1.2):**
 - Gas nozzle, conical, Ø 16 mm; 76 mm
 - Gas diffuser, "Longlife", 28 mm
 - Contact tip M8 x 30 mm; Ø 1.2 mm
 - Contact tip holder M8 x 25 mm

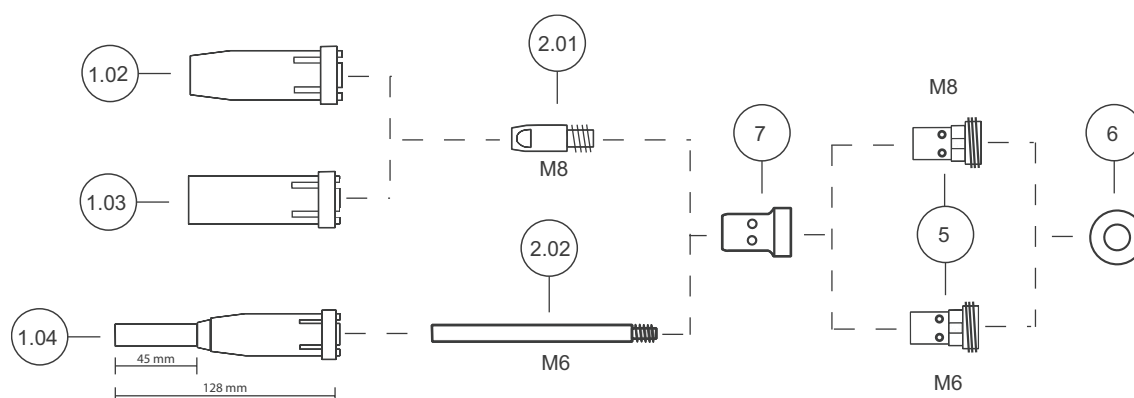
Duty cycle CO₂ 400 A / 100 %

Duty cycle M21 350 A / 100 %

Hose package length m	Item no.
3.0	394-600011-00000
4.0	394-600011-00004
5.0	394-600011-00005



■ Consumables



Item	Designation	Nozzle Ø mm	Wire Ø mm	Thread	Length mm	Material	PU Units	Item no.
-	Centring tool for narrow-gap contact tip	-	-	-	-	-	1	394-000469-00000
1.02	Gas nozzle, highly conical	14	-	-	76	Copper	10	394-000436-00000
1.02	Gas nozzle, conical	16	-	-	76	Copper	10	394-000435-00000
1.03	Gas nozzle, cylindrical	19	-	-	76	Copper	10	394-000437-00000
1.04	Narrow-gap gas nozzle	11	-	-	128	-	10	394-000711-00000
2.01	Contact tip	-	0.8	M8	30	E-Cu	20	394-000447-00000
2.01	Contact tip	-	1	M8	30	E-Cu	20	394-000941-00000
2.01	Contact tip	-	1.2	M8	30	E-Cu	20	394-000942-00000
2.01	Contact tip	-	1.6	M8	30	E-Cu	20	394-000456-00000
2.01	Contact tip	-	0.8	M8	30	CuCrZr	20	394-014024-00000
2.01	Contact tip	-	1	M8	30	CuCrZr	20	394-000450-00000
2.01	Contact tip	-	1.2	M8	30	CuCrZr	20	394-000452-00000
2.01	Contact tip	-	1.6	M8	30	CuCrZr	20	394-000458-00000
2.01	Contact tip, aluminium welding	-	0.8	M8	30	E-Cu	20	394-016115-00000
2.01	Contact tip, aluminium welding	-	1	M8	30	E-Cu	20	394-016117-00000
2.01	Contact tip, aluminium welding	-	1.2	M8	30	E-Cu	20	394-016118-00000
2.01	Contact tip, aluminium welding	-	1.6	M8	30	E-Cu	20	394-016120-00000
2.02	Narrow-gap contact tip	-	1	M6	83	E-Cu	1	394-000707-00000
2.02	Narrow-gap contact tip	-	1.2	M6	83	E-Cu	1	394-003059-00000
5	Contact tip holder	-	-	M6	25	Brass	1	394-000439-00000
5	Contact tip holder	-	-	M8	25	Brass	10	394-000438-00000
6	Insulating disk	-	-	-	-	-	10	394-000761-00000
7	Gas diffuser	-	-	-	28	-	10	394-000948-00000
7	Gas diffuser, long life	-	-	-	28	-	10	394-011628-00000

MIG/MAG welding torch, water-cooled • UM 501 W



- Water-cooled standard MIG/MAG welding torch
- Ergonomic grip with ball joint
- Anti-kink spring on both the welding torch and the connection
- Type-related standard consumables
- **Equipment as supplied (steel wire Ø 1.2):**
 - Gas nozzle, conical, Ø 16 mm; 76 mm
 - Gas diffuser, "Longlife", 28 mm
 - Contact tip M8 x 30 mm; Ø 1.2 mm
 - Contact tip holder M8 x 25 mm

Duty cycle CO2

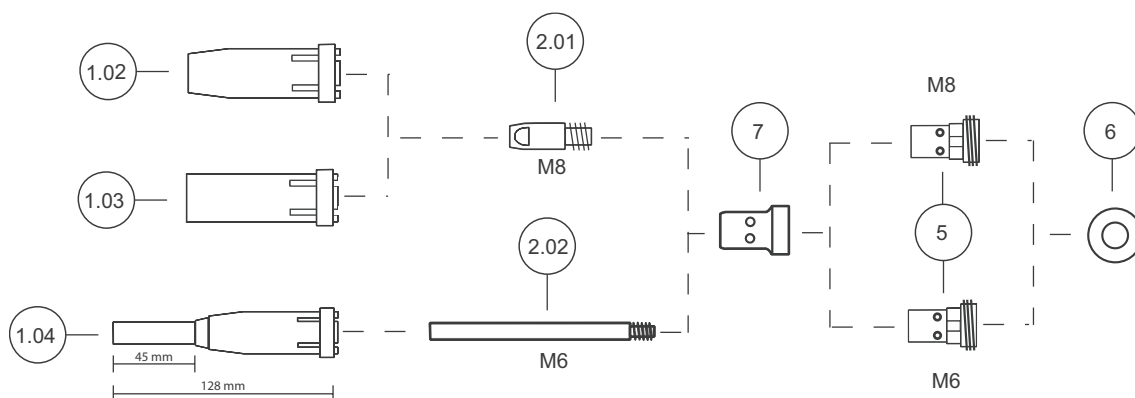
500 A / 100 %

Duty cycle M21

450 A / 100 %

Hose package length m	Item no.		
3.0	394-600012-00000		
4.0	394-600012-00004		
5.0	394-600012-00005		

Consumables



Item	Designation	Nozzle Ø mm	Wire Ø mm	Thread	Length mm	Material	PU Units	Item no.		
-	Centring tool for narrow-gap contact tip	-	-	-	-	-	1	394-000469-00000		
1.02	Gas nozzle, highly conical	14	-	-	76	Copper	10	394-000436-00000		
1.02	Gas nozzle, conical	16	-	-	76	Copper	10	394-000435-00000		
1.03	Gas nozzle, cylindrical	19	-	-	76	Copper	10	394-000437-00000		
1.04	Narrow-gap gas nozzle	11	-	-	128	-	10	394-000711-00000		
2.01	Contact tip	-	0.8	M8	30	E-Cu	20	394-000447-00000		
2.01	Contact tip	-	1	M8	30	E-Cu	20	394-000941-00000		
2.01	Contact tip	-	1.2	M8	30	E-Cu	20	394-000942-00000		
2.01	Contact tip	-	1.6	M8	30	E-Cu	20	394-000456-00000		
2.01	Contact tip	-	0.8	M8	30	CuCrZr	20	394-014024-00000		
2.01	Contact tip	-	1	M8	30	CuCrZr	20	394-000450-00000		
2.01	Contact tip	-	1.2	M8	30	CuCrZr	20	394-000452-00000		
2.01	Contact tip	-	1.6	M8	30	CuCrZr	20	394-000458-00000		
2.01	Contact tip, aluminium welding	-	0.8	M8	30	E-Cu	20	394-016115-00000		
2.01	Contact tip, aluminium welding	-	1	M8	30	E-Cu	20	394-016117-00000		
2.01	Contact tip, aluminium welding	-	1.2	M8	30	E-Cu	20	394-016118-00000		
2.01	Contact tip, aluminium welding	-	1.6	M8	30	E-Cu	20	394-016120-00000		
2.02	Narrow-gap contact tip	-	1	M6	83	E-Cu	1	394-000707-00000		
2.02	Narrow-gap contact tip	-	1.2	M6	83	E-Cu	1	394-003059-00000		
5	Contact tip holder	-	-	M6	25	Brass	1	394-000439-00000		
5	Contact tip holder	-	-	M8	25	Brass	10	394-000438-00000		
6	Insulating disk	-	-	-	-	-	10	394-000761-00000		
7	Gas diffuser	-	-	-	28	-	10	394-000948-00000		
7	Gas diffuser, long life	-	-	-	28	-	10	394-011628-00000		

Steel liner, insulated

- Steel liner for feeding steel wire
- Used in gas- and water-cooled welding torches
- Insulation prevents gas losses

Wire Ø	0.8 mm - 1 mm
Inside Ø	1.5 mm
Outside Ø	3.8 mm
Colour code	Blue

Length m	PU Pack	Item no.		
3.6	2	094-013074-00500		
4.6		094-013075-00500		
5.6		094-014221-00500		



Steel liner, insulated

- Steel liner for feeding steel wire
- Used in gas- and water-cooled welding torches
- Insulation prevents gas losses

Wire Ø	1.2 mm - 1.6 mm
Inside Ø	2 mm
Outside Ø	4.6 mm
Colour code	Red

Length m	PU Pack	Item no.		
3.6	2	094-007239-00500		
4.6		094-014223-00500		
5.6		094-014224-00500		



Steel liner, insulated

- Steel liner for feeding steel wire
- Used in gas- and water-cooled welding torches
- Insulation prevents gas losses

Wire Ø	1.6 mm - 2 mm
Inside Ø	2.4 mm
Outside Ø	4.6 mm
Colour code	Yellow

Length m	PU Pack	Item no.		
3.6	2	094-013662-00501		
4.6		094-013663-00501		
5.6		094-013664-00501		



Combined liner, PA

- Liner (combined liner) for feeding CrNi, aluminium, flux cored wires and CuSi wires
- Manufactured to length, with collet and O-ring

Wire Ø	0.6 mm - 1 mm
Inside Ø	1.5 mm
Outside Ø	4 mm
Colour code	Grey
Material	PA

Length m	Item no.		
3.0	094-013687-00000		
4.0	094-013687-00004		
5.0	094-013687-00005		



MIG/MAG welding torches ● Steel and plastic liners

Combined liner, PA



- Liner (combined liner) for feeding CrNi, aluminium, flux cored wires and CuSi wires
- Manufactured to length, with collet and O-ring

Wire Ø	1.2 mm - 1.6 mm
Inside Ø	2 mm
Outside Ø	4 mm
Colour code	Grey
Material	PA

Length m	Item no.		
3.0	094-013076-00000		
4.0	094-013077-00000		
5.0	094-013565-00000		

Combined liner, PA



- Liner (combined liner) for feeding CrNi, aluminium, flux cored wires and CuSi wires
- Manufactured to length, with collet and O-ring

Wire Ø	1.6 mm - 2 mm
Inside Ø	2.3 mm
Outside Ø	4.7 mm
Colour code	Grey
Material	PA

Length m	Item no.		
3.0	094-013665-00000		
4.0	094-013666-00000		
5.0	094-013667-00000		

Combined liner, Teflon



- Liner (combined liner) for feeding CrNi, aluminium, flux cored wires and CuSi wires
- Manufactured to length, with collet and O-ring

Wire Ø	0.6 mm - 1 mm
Inside Ø	1.5 mm
Outside Ø	4 mm
Colour code	Blue
Material	Teflon

Length m	Item no.		
3.0	094-013800-00000		
4.0	094-013800-00004		
5.0	094-013800-00005		

Combined liner, Teflon



- Liner (combined liner) for feeding CrNi, aluminium, flux cored wires and CuSi wires
- Manufactured to length, with collet and O-ring

Wire Ø	1.2 mm - 1.6 mm
Inside Ø	2 mm
Outside Ø	4 mm
Colour code	Red
Material	Teflon

Length m	Item no.		
3.0	094-013801-00000		
4.0	094-013801-00004		
5.0	094-013801-00005		

Combined liner, Teflon

- Liner (combined liner) for feeding CrNi, aluminium, flux cored wires and CuSi wires
- Manufactured to length, with collet and O-ring

Wire Ø	1.6 mm - 2 mm
Inside Ø	2.7 mm
Outside Ø	4.7 mm
Colour code	Yellow
Material	Teflon

Length m	Item no.		
3.0	094-013802-00000		
4.0	094-013802-00004		
5.0	094-013802-00005		



Combined liner, carbon Teflon

- Liner (combined liner) for feeding CrNi, aluminium, flux cored wires and CuSi wires
- Manufactured to length, with collet and O-ring

Wire Ø	0.6 mm - 1 mm
Inside Ø	1.5 mm
Outside Ø	4 mm
Colour code	Black
Material	Carbon Teflon

Length m	Item no.		
3.0	094-013871-00000		
4.0	094-013871-00004		
5.0	094-013871-00005		



Combined liner, carbon Teflon

- Liner (combined liner) for feeding CrNi, aluminium, flux cored wires and CuSi wires
- Manufactured to length, with collet and O-ring

Wire Ø	1.2 mm - 1.6 mm
Inside Ø	2 mm
Outside Ø	4 mm
Colour code	Black
Material	Carbon Teflon

Length m	Item no.		
3.0	094-013828-00000		
4.0	094-013828-00004		
5.0	094-013828-00005		



Combined liner, carbon Teflon

- Liner (combined liner) for feeding CrNi, aluminium, flux cored wires and CuSi wires
- Manufactured to length, with collet and O-ring

Wire Ø	1.6 mm - 2 mm
Inside Ø	2.7 mm
Outside Ø	4.7 mm
Colour code	Black
Material	Carbon Teflon

Length m	Item no.		
3.0	094-013829-00000		
4.0	094-013829-00004		
5.0	094-013829-00005		



Guide tube



- Guide tube for use on a liner when welding or brazing soft or alloyed wire
- **Recommendation:**
- Use a steel liner with capillary tube to weld hard, unalloyed wire electrodes (steel)
- Use a liner with guide tube to weld or braze soft or alloy wire electrodes
- For converting wire feeders

Length mm	Item no.		
45	094-019350-00000		
66	094-018316-00000		
100	094-020064-00000		
105	094-006051-00000		
115	094-001064-00000		

Capillary tube



- Capillary tube for use on a steel liner when welding steel wire
- **Recommendation:**
- Use a steel liner with capillary tube to weld hard, unalloyed wire electrodes (steel)
- Use a liner with guide tube to weld or braze soft or alloy wire electrodes
- For converting wire feeders

Length mm	PU Units	Version	Item no.		
48	5	Wire diameter ≤ 1.6 mm	094-014186-00000		
69		Wire diameter ≤ 2.0 mm	094-014667-00000		
107		Wire diameter ≤ 1.6 mm	094-006634-00000		
105		Wire diameter ≤ 2.4 mm	094-021470-00000		
118		Wire diameter ≤ 1.6 mm	094-002559-00000		
		Wire diameter ≤ 2.0 mm	094-007515-00000		

Torch key



- Torch key for fitting contact tip, contact tip holder and other accessories

Item no.		
094-016038-00001		

Gas nozzle cleaner



- Nozzle cleaner for MIG/MAG welding torches
- Deposits inside the nozzle are removed by rotating the nozzle cleaner

Item no.		
098-000407-00000		

Hose cutter



- Cutter for the cutting of PA and PTFE liners.

Item no.		
094-016585-00000		

Side cutter

Item no.		
098-003899-00000		



CO2special-purpose pliers • Original FIX®

- Shielding gas cleaning and assembly pliers
- Rapid and true-to-size cutting of the welding wire
- Time-saving cleaning of the shielding gas nozzle
- Removal of the shielding gas nozzle
- Releasing and tightening of the contact tip



Material	Special steel		
Gas nozzle, diameter mm	Item no.		
12 - 15	098-000406-00000		
15 - 18	098-001284-00000		

This image shows a single sheet of white paper with horizontal ruling lines. The lines are evenly spaced and run across the width of the page. There are no margins, text, or other markings on the paper.

HEADQUARTERS

EWM AG
Dr. Günter-Henle-Straße 8 | 56271 Mündersbach | Germany
Tel: +49 2680 181-0 | Fax: -244
www.ewm-group.com | info@ewm-group.com

TECHNOLOGY CENTRE

EWM AG
Forststraße 7-13 | 56271 Mündersbach | Germany
Tel: +49 2680 181-0 | Fax: -144
www.ewm-group.com | info@ewm-group.com



PRODUCTION, SALES AND SERVICE

EWM AG
Dr. Günter-Henle-Straße 8 | 56271 Mündersbach | Germany
Tel: +49 2680 181-0 | Fax: -244
www.ewm-group.com | info@ewm-group.com

EWM HIGHTEC WELDING s.r.o.
9. května 718 / 31 | 407 53 Jiříkov | Czech Republic
Tel: +420 412 358-551 | Fax: -504
www.ewm-jirikov.cz | info@ewm-jirikov.cz

EWM HIGH TECHNOLOGY (Kunshan) Ltd.
10 Yuanshan Road, Kunshan | New & Hi-tech Industry Development Zone
Kunshan City | Jiangsu | Post code 215300 | People's Republic of China
Tel: +86 512 57867-188 | Fax: -182
www.ewm.cn | info@ewm-group.cn



SALES AND SERVICE LOCATIONS GERMANY

EWM AG | Sales and Technology Centre Nossen
Gewerbestraße 8 | 01683 Nossen
Tel: +49 35242 6512-0 | Fax: -20
www.ewm-nossen.de | info@ewm-nossen.de

EWM AG | Sales and Technology Centre Rathenow
Grünauer Fenn 4 | 14712 Rathenow
Tel: +49 3385 49402-0 | Fax: -20
www.ewm-rathenow.de | info@ewm-rathenow.de

EWM AG | Sales and Technology Centre Wittstock
Ruppiner Straße 6 | 16909 Wittstock
Tel: +49 3394 40009-0 | Fax: -20
www.ewm-wittstock.de | info@ewm-wittstock.de

EWM AG | Sales and Technology Centre Göttingen
Rudolf-Winkel-Straße 7-9 | 37079 Göttingen
Tel: +49 551 3070713-0 | Fax: -20
www.ewm-goettingen.de | info@ewm-goettingen.de

EWM AG | Sales and Technology Centre Ibbenbüren
Gildestraße 23 | 49477 Ibbenbüren
Tel: +49 5451 93683-0 | Fax: -20
www.ewm-ibbenbueren.de | info@ewm-ibbenbueren.de

EWM AG | Sales and Technology Centre Pulheim
Dieselstraße 9b | 50259 Pulheim
Tel: +49 2238 46466-0 | Fax: -14
www.ewm-pulheim.de | info@ewm-pulheim.de

EWM AG | Sales and Technology Centre Koblenz
August-Horch-Strasse 13a | 56070 Koblenz
Tel: +49 261 963754-0 | Fax: -10
www.ewm-koblenz.de | info@ewm-koblenz.de

EWM AG | Sales and Technology Centre Siegen
Köhlerweg 29 | 57250 Netphen
Tel: +49 2738 69241-0 | Fax: -20
www.ewm-siegen.de | info@ewm-siegen.de

EWM AG | Sales and Technology Centre Stuttgart
Schelmenwasenstr. 23 | 70567 Stuttgart-Fasanenhof
Tel: +49 711 633 929-0 | Fax: -20
www.ewm-stuttgart.de | info@ewm-stuttgart.de

EWM AG | Sales and Technology Centre Singen
Hohenkräher Brühl 6 | 78259 Mühlhausen-Ehingen
Tel: +49 7733 5039-0 | Fax: -79
www.ewm-singen.de | info@ewm-singen.de

EWM AG | Sales and Technology Centre Munich
Gadastraße 18a | 85232 Bergkirchen
Tel: +49 8142 284584-0 | Fax: -9
www.ewm-muenchen.de | info@ewm-muenchen.de

EWM AG | Sales and Technology Centre Tett nang
Karlsdorfer Straße 43 | 88069 Tett nang
Tel: +49 7542 97998-0 | Fax: -29
www.ewm-tett nang.de | info@ewm-tett nang.de

EWM AG | Sales and Technology Centre Neu-Ulm
Heinkelstraße 8 | 89231 Neu-Ulm
Tel: +49 731 7047939-0 | Fax: -15
www.ewm-neu-ulm.de | info@ewm-neu-ulm.de



SALES AND SERVICE LOCATIONS INTERNATIONAL

China
EWM HIGH TECHNOLOGY (Kunshan) Ltd.
10 Yuanshan Road, Kunshan | New & Hi-tech Industry Development Zone
Kunshan City | Jiangsu | Post code 215300 | People's Republic of China
Tel: +86 512 57867-188 | Fax: -182
www.ewm.cn | info@ewm-group.cn

Austria
EWM HIGHTEC WELDING GmbH
Gewerbestraße 7 | 4653 Eberstallzell | Austria
Tel: +43 7241 28400-0 | Fax: -20
www.ewm-austria.at | info@ewm-austria.at

Turkey
EWM KAYNAK SİSTEMLERİ TİC. LTD. ŞTİ.
Orhangazi Mah. Mimsan San. Sit. 1714. Sok. 22/B blok No:12-14
34538 Esenyurt | Istanbul - Turkey
Tel: +90 212 494 32 19
www.ewm.com.tr | turkey@ewm-group.com

Great Britain
EWM HIGHTEC WELDING UK Ltd.
Unit 2B Coopies Way | Coopies Lane Industrial Estate
Morpeth | Northumberland | NE61 6JN | Great Britain
Tel: +44 1670-505875 | Fax: -514305
www.ewm-morpeth.co.uk | info@ewm-morpeth.co.uk

Czech Republic
EWM HIGHTEC WELDING s.r.o.
Sales and Service Centre Benesov u Prahy
Tyršova 2106 | 256 01 Benešov u Prahy | Czech Republic
Tel: +420 317 729-517 | Fax: -712
www.ewm-benesov.cz | info@ewm-benesov.cz

Poland
EWM AG Oddział w Polsce
Gdańska 13A | 70-661 Stettin | Poland
Tel: +48 91 433 08 70
www.ewm-stettin.pl | info@ewm-stettin.pl



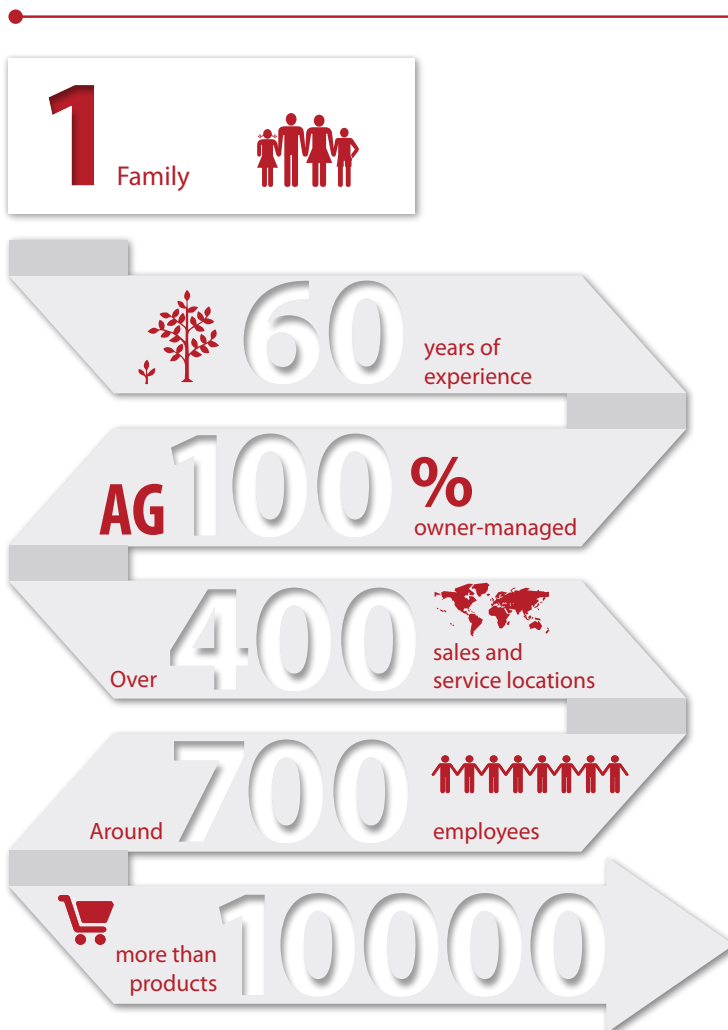
Factories



Locations

● More than 400 EWM sales partners worldwide.


Would you like to find out more? Call us or send us an email! We're always happy to hear from you.
Tel.: +49 02680 181-0 | www.ewm-group.com/contact



Quality from Germany

EWM AG is Germany's largest and one of the most important world-wide manufacturers of arc welding technology and a major driving force in welding technology.

The family-run company from Mündersbach has been living its motto **"WE ARE WELDING"** for over 60 years with forward-looking, well thought-out and sustainable complete solutions, designed with a large helping of passion for industrial clients, as well as skilled craft businesses.

1 Partner for all your welding technology needs 

EWM AG

Dr. Günter-Henle-Straße 8
D-56271 Mündersbach, Germany
Tel: +49 2680 181-0 | Fax: -244
www.ewm-group.com
info@ewm-group.com

Come visit us!



Sales | Consultancy | Service