

drive 4X wire feeder

The perfect feeder

MULTIMATRIX®
/// Perfection is the principle



www.multimatrix.info

/// simply more

Universal use

drive 4X wire feeder

With rapid set-up times and straightforward handling, the drive 4X wire feeder is ready for virtually any situation, from construction sites to production halls, tight spaces to long distances, and tack welding to continuous operation. Regardless of the MIG/MAG welding machine you use it with: You'll achieve flawless results thanks to highly precise wire feeding, high work comfort with the ergonomically balanced carrying handle, low weight, and manhole-appropriate dimensions. A long service life is assured, even when used in three-shift operation.

Secure, precise wire feeding

- / Four driven wire feed rollers
- / Automatic wire inching saves time
- / Easy, tool-free roller change
- / Permanently secured roller fastener

Illumination of internal spaces

- / Changing wires and operating the machine is easy even with poor lighting

Protection against dust and dirt

- / Dust-proof wire spool cap
- / Inspection window indicates level of wire spool
- / Simple and convenient spool change
- / Fully insulated wire space

Secure sealing system

- / Doors stay closed even under the most demanding conditions

Rapid set-up

- / Tool-free replacement of intermediate hose packages; externally accessible connections eliminate the need for intervention in the electric area
- / Strain-relieved hose package with strap and swivel
- / Protected hose package connections

Protected connections

- / Recessed Euro torch connector and water connection
- / Plastic impact protection

Rugged structure

- / Solidly-designed base made from continuously cast aluminium
- / Mounting options for sliding rails, rubber feet, wheel kit, etc.
- / Standard mandrel holder



drive 4X
wire feeder

For universal use, e.g. with:

One wire feeder and one universal control for various MIG/MAG welding machines



alpha Q puls Progress

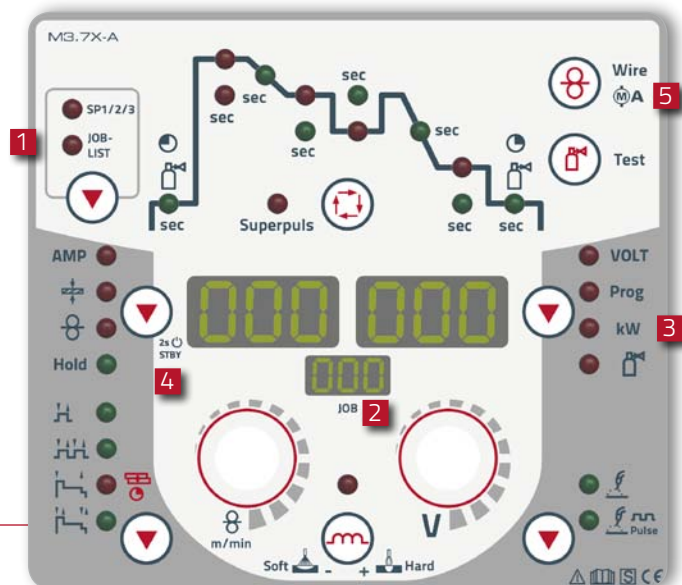


Phoenix puls Progress
Taurus Synergic S



Phoenix puls Progress, Expert
Taurus Synergic S

MULTIMATRIX® wire feeder control



1 JOB selection

Direct selection from the JOB list saves time; custom JOBS SP1–SP3 (Expert)

2 JOB display

The current welding task (JOB number) is always in view

3 Kilowatt display

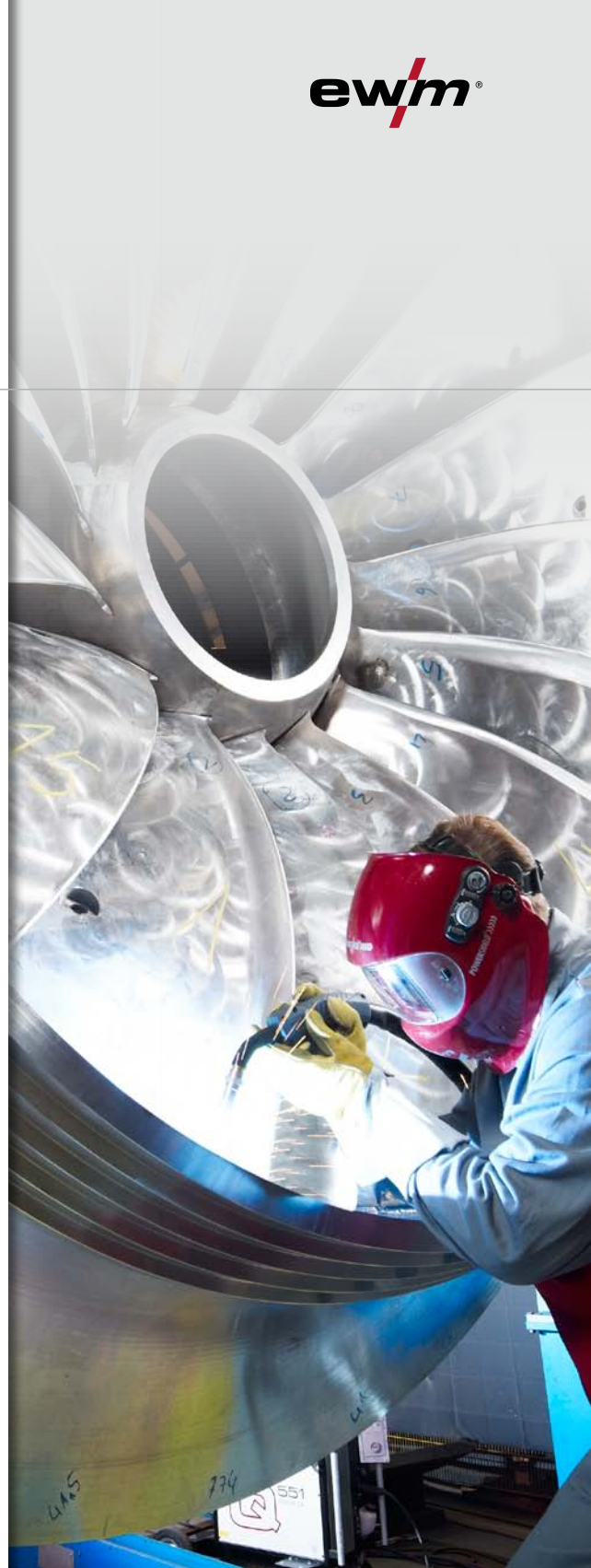
For calculating energy per unit length

4 Standby function

Save power at press of a button or automatically (time-controlled)

5 Motor current display

Retrieval of wire feeder's motor current increases operational reliability: Changes indicate wire feed irregularities



MT function torch with X technology

These function torches transfer operating and display signals through the standard Euro torch connector; a separate control cable and additional connector plugs are no longer needed:

- Lower weight
- Improved handling and increased freedom of movement
- Very safe and robust
- Easy service

MULTIMATRIX®

/// Perfection is the principle

For the most demanding requirements in continuous operation

Wire feed mechanism

Dual ball-bearing drive axles and four individually driven wire feed rollers make the wire feed mechanism highly precise and robust with a long service life. When combined with power sources and welding torches from ewm, the result is a perfectly balanced and complete system, whose sum total is truly more than the individual parts. The bottom line: higher precision, greater speed, and more efficiency.

No more mix-ups

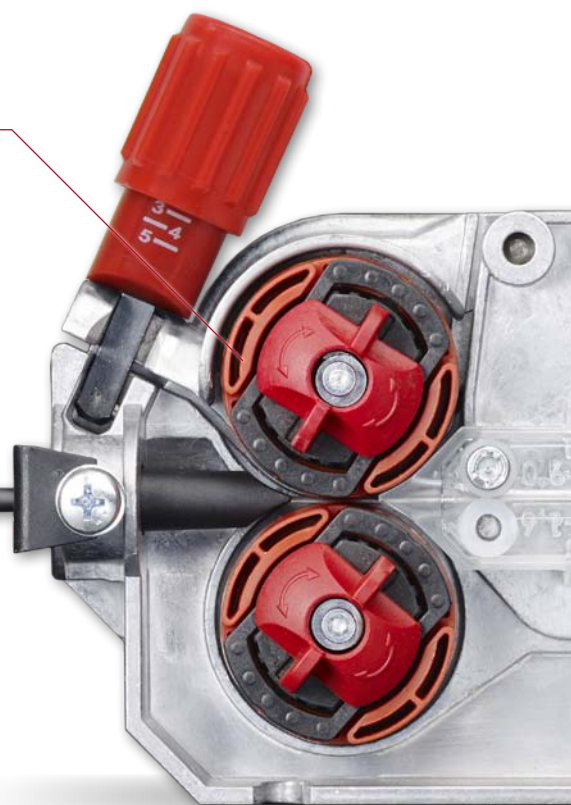
- / Colour-coded rollers for various wire diameters
- / avoids incorrect assembly
- / for fast and easy reading
- / Additional yellow colour-coding for rollers with U-groove for welding with aluminium
- / Special groove shape developed for soft aluminium wires, optimised for maximum precision



e.g. Ø 1 mm with V-groove (blue):
for steel, stainless steel, flux
cored wire, brazing



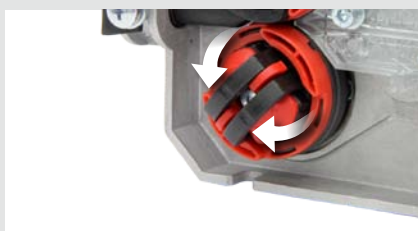
e.g. Ø 1 mm with U-groove (blue/yellow):
for aluminium



Exchange rollers in just three steps – very quickly, without tools and without parts that can be lost



I. Unlock the roller fastener



II. Swivel out secured roller fastener



III. Exchange the roller



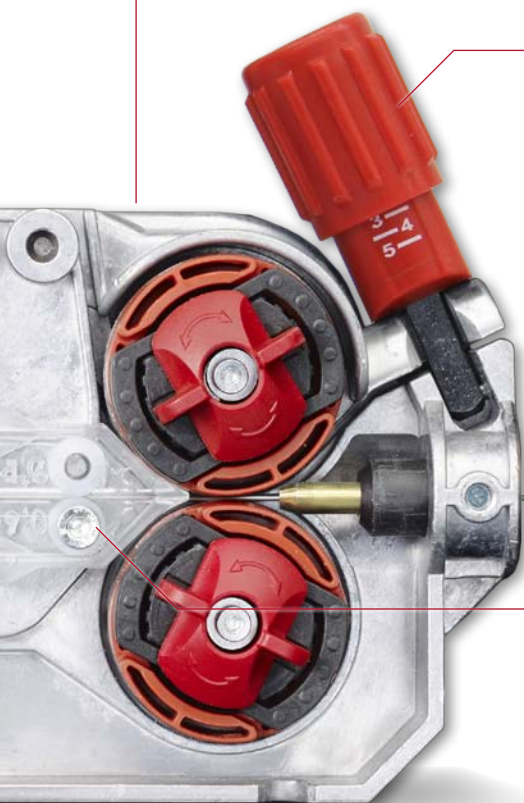
Illumination of internal spaces

- / Changing wires and operating the machine is easy even with poor lighting

Functions

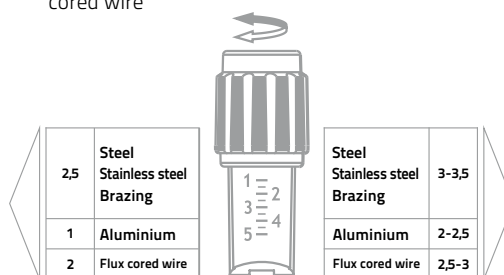
- 1** Key switch for locking the control
- 2** Changeover switch Program or up/down function torch
- 3** Buttons Currentless wire inching

Wire feed mechanism



Adjustable contact pressure

- / Each roller pair can be individually adjusted to the wire being fed
- / For aluminium, steel, stainless steel, brazing, flux cored wire



Visible wire feeding

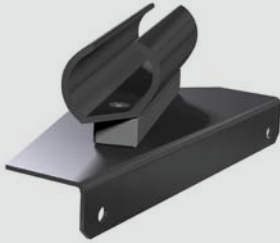
Supports automatic inching and straightforward visual control

The benefits of the wire feed mechanism at a glance:

- Die cast aluminium housing is robust for a long service life
- Double ball bearings (instead of friction bearings) on all four drive axles reduce roller tolerances for a longer service life and less friction
- Error-free automated wire inching without time-consuming opening saves time
- Tool-free roller replacement with no roller attachment parts that can be lost
- Covered gearing protects against injury
- Large roller diameter (37 mm) for optimal transfer of power
- 4-roller drive

Adapts to individual requirements

drive 4X wire feeder options



Torch holder

- For greater security when working
- Extends the life of the torch
- Keeps work area organised



Wheel assembly kit

- Makes the drive 4X even more flexible
- Ensures limitless mobility
- Large rollers (Ø 125 mm) for optimal freedom of movement



Crane suspension bracket

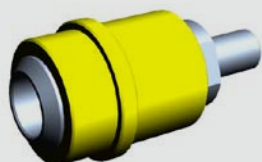
- For easier and safe transportation
- Maximum mobility even during hanging operations





Plexiglas protective cap

- Reliable protection for the entire controller
- Good visibility of the protected display



Connection for drum feed

- Drum-based feed boosts effectiveness
- Less need to change wire feed rollers saves time



Heavy duty kit (protective plate plus crane suspension bracket)

- For optimised protection under rough conditions
- For standing, lying, and hanging operation
- Sliding, temperature- and impact-resistant protective plate
- Crane suspension for maximum mobility and straightforward, secure transportation



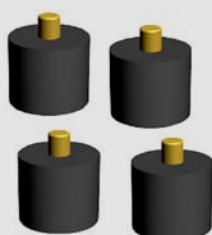
Front-side load socket (factory option)

- Connection capability for gouging torch and electrode holder
- Expanded flexibility on the job



Flow meter

- For common centralised gas supplies
- Precise adjustment and examination directly on site
- Particularly useful with long hose packages, e.g. in shipbuilding and steel construction



Rubber feet

- Replace sliding rails



Max. welding current at 60 % DC (40 °C)	550 A
Max. welding current at 100 % DC (40 °C)	430 A
Wire speed	0,5 m/min to 24 m/min
Factory-installed rolls	1,2 mm (for steel wires)
Drive	4 rolls (37 mm)
Suitable for manholes	Complete, from 420 mm (oval)
Wire spool diameter	Standardised spools from 200 mm to 300 mm
Torch connection	Euro torch connector
Protection classification	IP 23
Ambient temperature	-25 °C to +40 °C
Dimensions LxWxH in mm	660x280x380
Weight	13 kg

The right wire feed rolls directly in view

An overview of the available wire feed rolls is printed on the side panel of each drive 4X.

This makes it easy to select the right rolls for every application:

- V-groove for steel, stainless steel, flux-cored and brazing wires
- U-groove for aluminium wires
- Color codes for the relevant wire diameters

Ø mm	Ø inch	color	type	Art-Nr.	color code example	
0,8	.030			092-002770-00008		
				092-002771-00008		
0,9/ 1,0	.035/ .040			092-002770-00010		
				092-002771-00010		
1,2	.045			092-002770-00012		
				092-002771-00012		
1,4	.052			092-002770-00014		
1,6	.060			092-002770-00016		
				092-002771-00016		

* mild steel
* stainless steel
* flux-cored
* brazing

* aluminium

Set consists of 4 rolls

- Conversion kits no longer necessary
- Special aluminium roll sets



Headquarters

EWM AG
Dr. Günter-Henle-Straße 8
D-56271 Mündersbach
Tel: +49 2680 181-0 · Fax: -244
www.ewm-group.com
info@ewm-group.com

Technology Centre

EWM AG
Forststraße 7-13
D-56271 Mündersbach
Tel: +49 2680 181-0 Fax: -144
www.ewm-group.com
info@ewm-group.com

Sales and Logistics Centre

EWM HIGHTEC WELDING GmbH
Sälzerstr. 20a
D-56235 Ransbach-Baumbach
Tel: +49 2623 9276-0 · Fax: -244
www.ewm-sales.com
info@ewm-sales.com



Visit us!

Sales / Consultancy / Service

